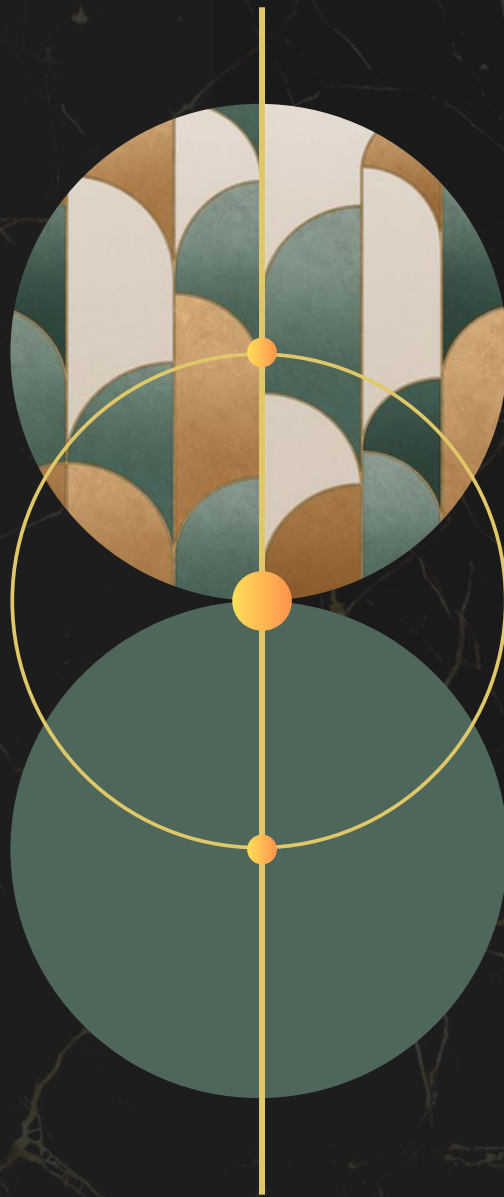




# ATTIC DECOR

*Transform Your Space*



Embrace The Essence Of Home

# ABOUT US

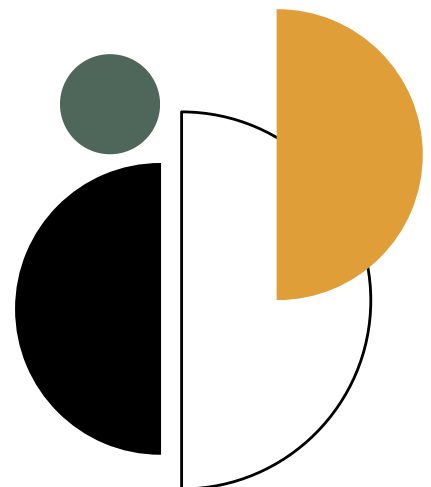
---

At Attic Decor, we believe that every space has a story waiting to be told, and we are here to craft narratives that resonate with our clients' visions and aspirations.

With a passion for design excellence and a commitment to exceptional craftsmanship, we transform interiors into captivating realms that inspire, delight, and endure.

At the heart of our philosophy lies the belief that design is not just about aesthetics; it's about creating environments that enhance the way people live, work, and interact. Whether it's a cozy residential retreat, a dynamic commercial space, or a vibrant hospitality venue, we approach each project with a holistic perspective, blending functionality, beauty, and innovation to deliver spaces that surpass expectations.

**VINAY PATEL**  
Co-Founder and CEO







*Transform Your Space*

into a treasured haven with

*Attic Decor*

# T N E T N O C

04  
Handles

13  
Laminates

27  
Kitchen Appliances

32  
Sinks & Faucet

36  
Bathroom Fittings

37  
Digital Locks & Safes

38  
Wallpaper

39  
Stone Veneer

40  
Wooden Flooring

41  
Modular Kitchen

42  
Blinds

43  
Exterior Cladding



ATTIC DECOR  
*Transform Your Space*

# HANDLES

HANDLES AREN'T JUST FUNCTIONAL;  
THEY'RE THE UNSUNG HEROES OF YOUR  
HOME OR BUSINESS. FROM SLEEK AND  
MODERN TO RUSTIC AND CHARMING,  
WE'VE GOT A HANDLE FOR EVERY STYLE



# MORTISE

ADHL - 001



ADHL - 002



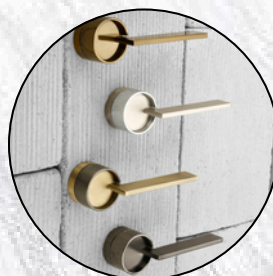
ADHL - 003



ADHL - 004

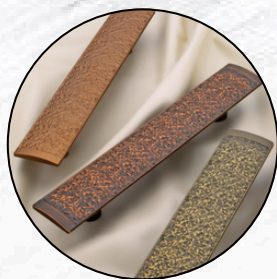


ADHL - 005





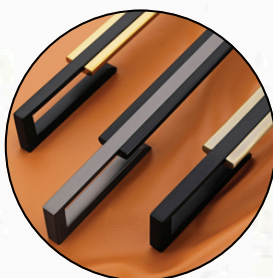
# MAIN DOOR



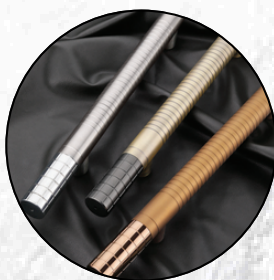
ADHL - 006



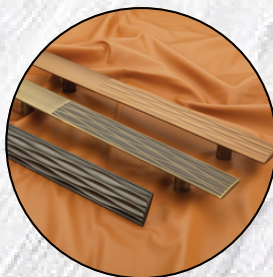
ADHL - 007



ADHL - 008

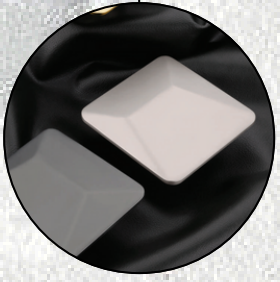


ADHL - 009



ADHL - 010





ADHL - 011



ADHL - 012



ADHL - 013



ADHL - 014



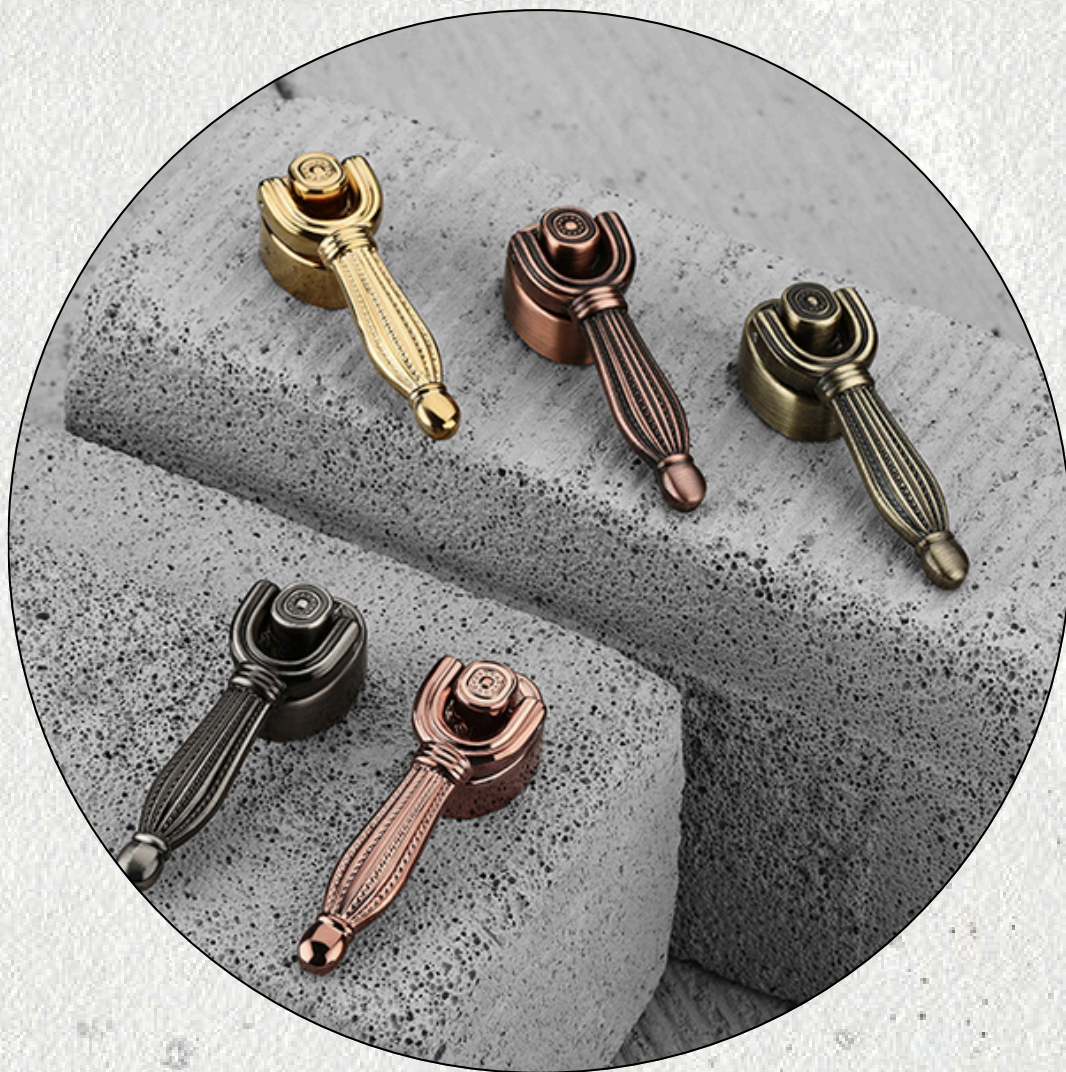
ADHL - 015



# KNOBS



# KADI



ADHL - 018



ADHL - 016



ADHL - 017



ADHL - 019



ADHL - 020



ADHL - 021



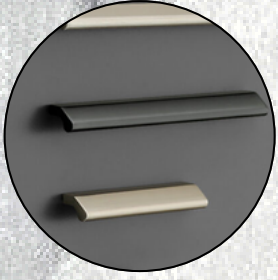
ADHL - 022



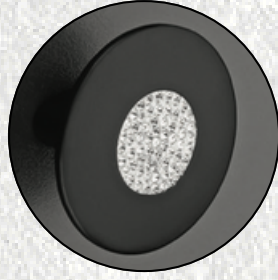
ADHL - 023



# DRAWER PULL



ADHL - 024



ADHL - 025



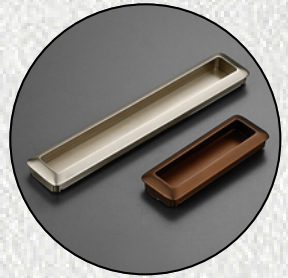
ADHL - 026



ADHL - 027



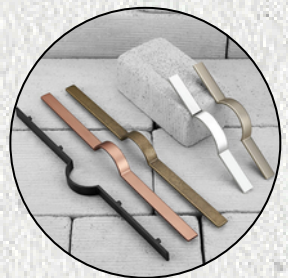
ADHL - 030



ADHL - 028

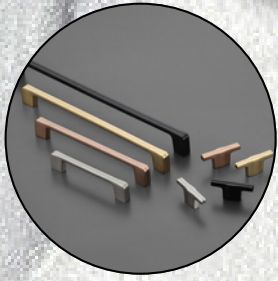


ADHL - 029



ADHL - 031

# CABINET



ADHL - 032



ADHL - 033



ADHL - 034



ADHL - 035



ADHL - 036



ADHL - 037

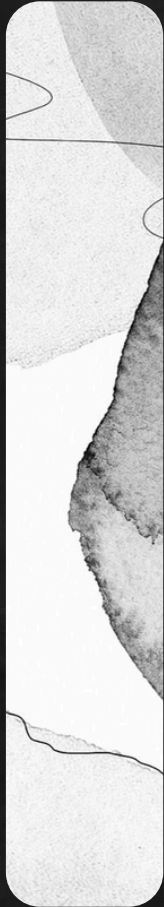


ADHL - 038



ADHL - 039





QUALITY THAT **OPENS DOORS**  
TO **HAPPINESS.**

Our commitment to quality isn't just a slogan; it's a promise

A HANDLE WITH  
**HEART.**



EXQUISITE **CRAFTSMANSHIP**, EXCEPTIONAL  
**TOUCH.**

Every piece is crafted with meticulous attention to detail, ensuring a flawless finish and exceptional quality



# UNIQUE COLLECTION

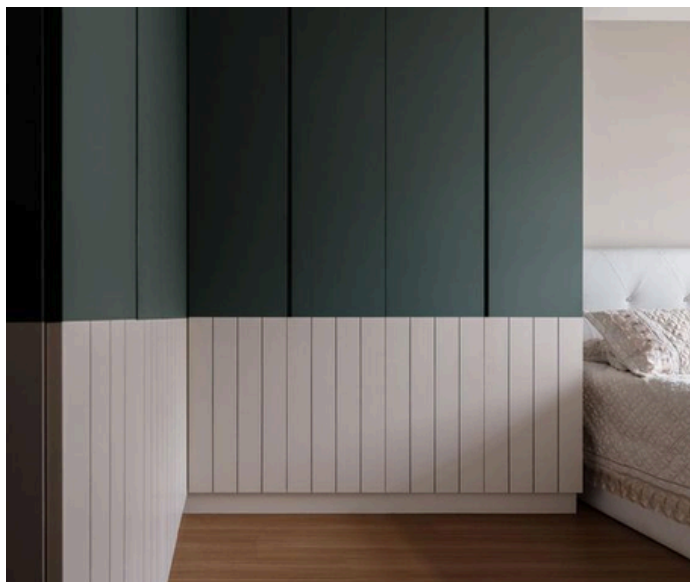
## UNIQUE DESIGNS





# LAMINATES

---



# PERFECT SURFACE SOLUTION

Our laminates are more than just surfaces; they're transformative elements that blend style, durability, and practicality.

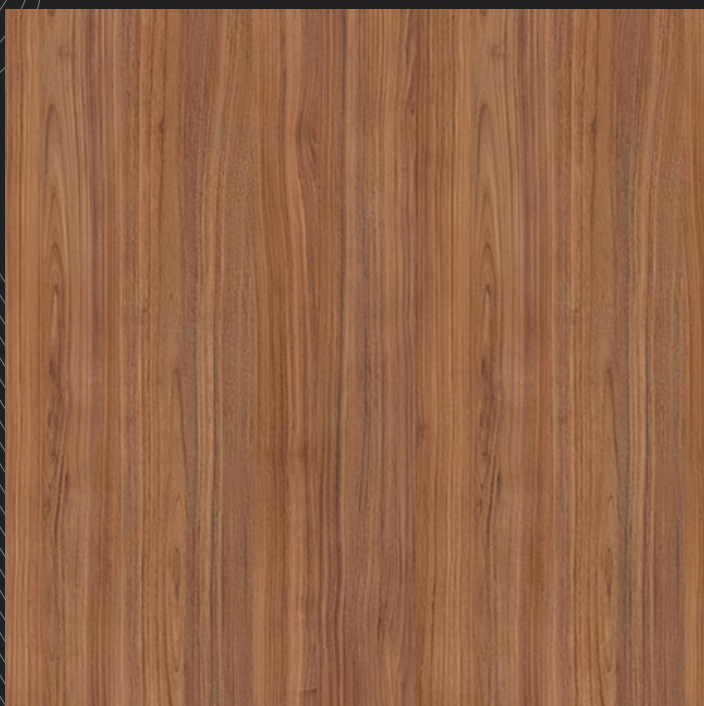
From the sleek sheen of modern kitchens to the warm charm of rustic living rooms, we offer a spectrum of designs to suit every aesthetic.

Experience the perfect fusion of beauty and function with our innovative laminate solutions.

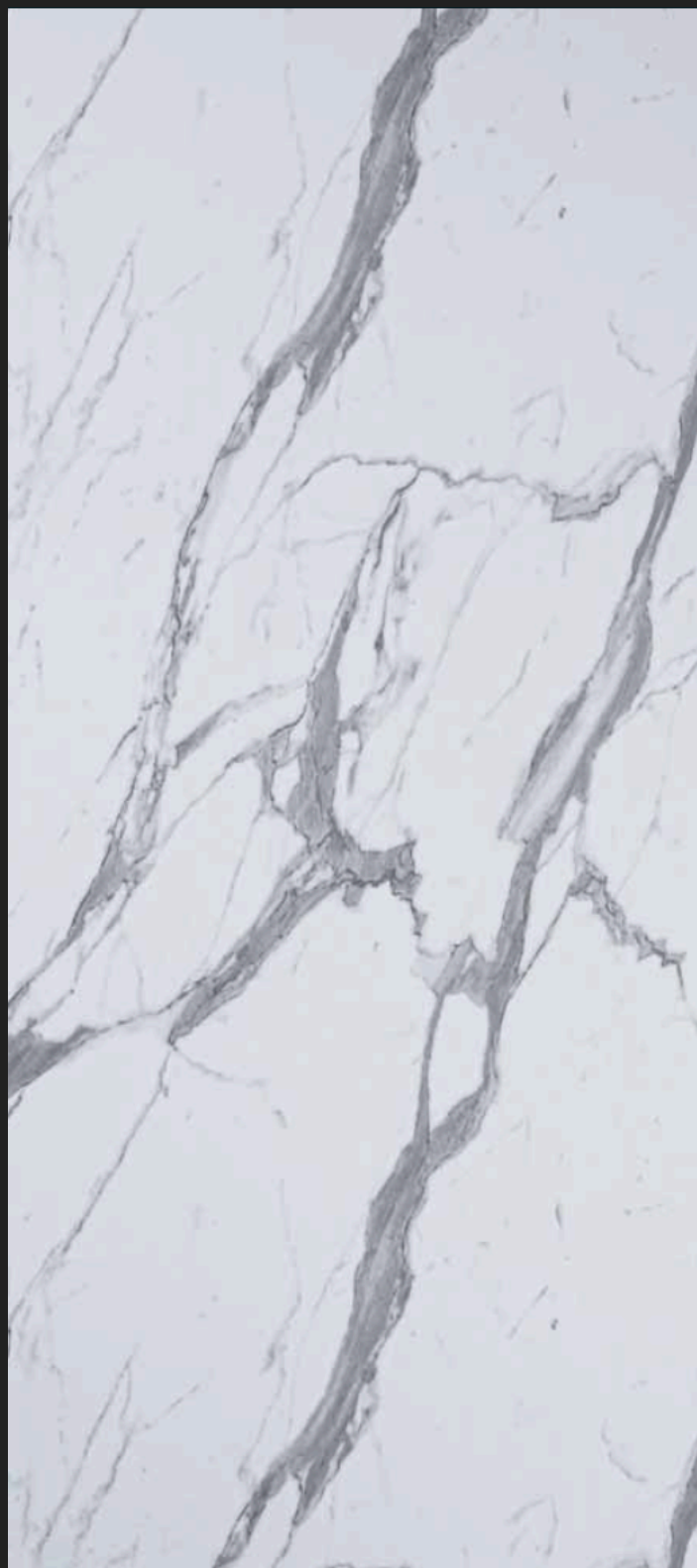




ADL - 001

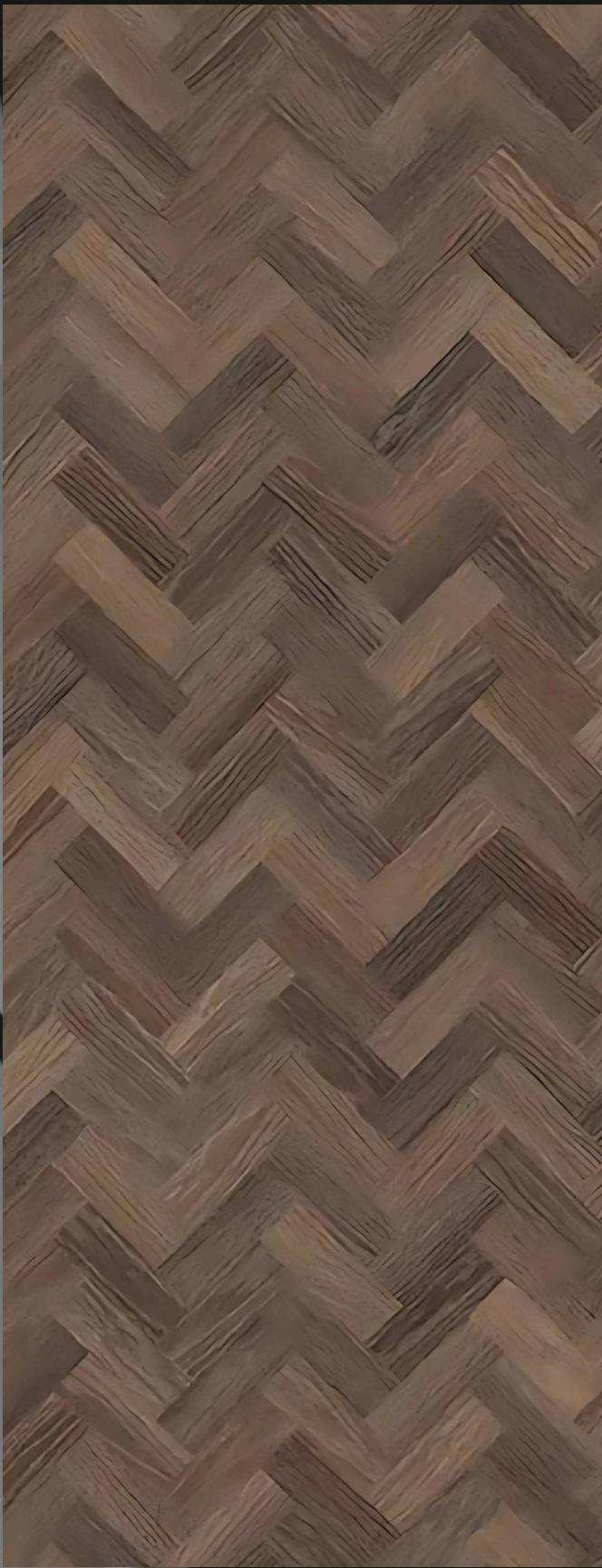


ADL - 002



ADL - 003





**ADL - 004**



**ADL - 005**



**ADL - 006**



**ADL - 007**





**ADL - 008**



**ADL - 009**



**ADL - 010**



**ADL - 011**



**ADL - 012**



**ADL - 013**





**ADL - 014**



**ADL - 015**



**ADL - 018**



**ADL - 016**



**ADL - 017**



LAMINATES FOR  
THE  
**AESTHETIC**  
INTERIORS

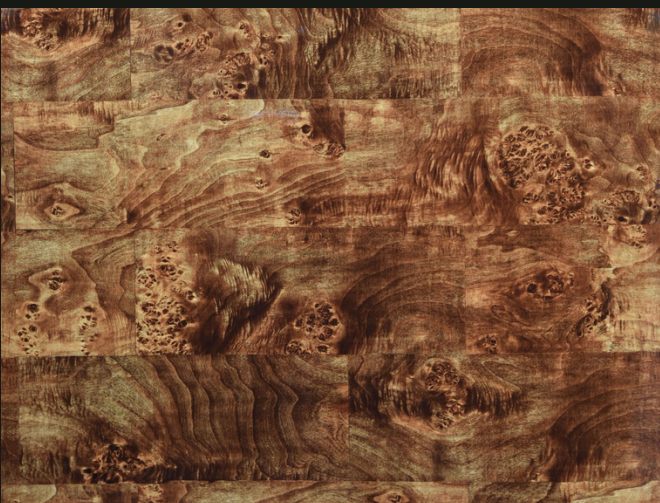
**PVC  
LAMINATES**



**ADL - 019**



**ADL - 021**



**ADL - 020**





ADL - 022



ADL - 023



ADL - 024



ADL - 025



ADL - 026



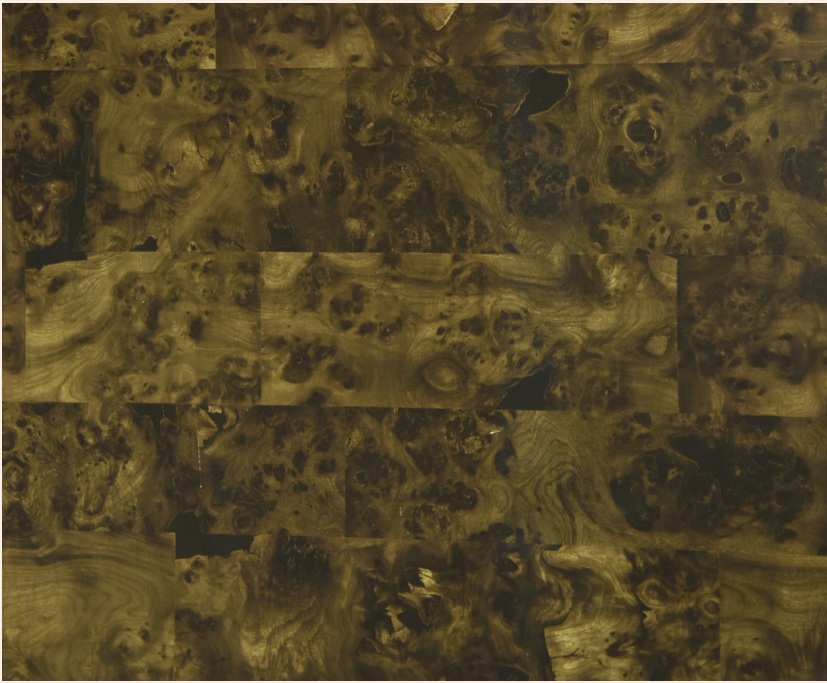


ADL - 027



ADL - 028





**ADL - 029**



**ADL - 030**



**ADL - 031**



**ADL - 032**



← **GreenLam**

**CenturyLam** →



← **Royale Touche**

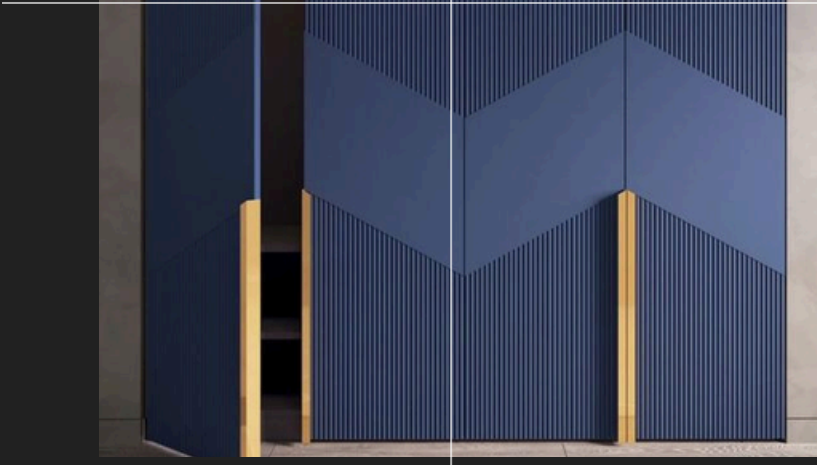
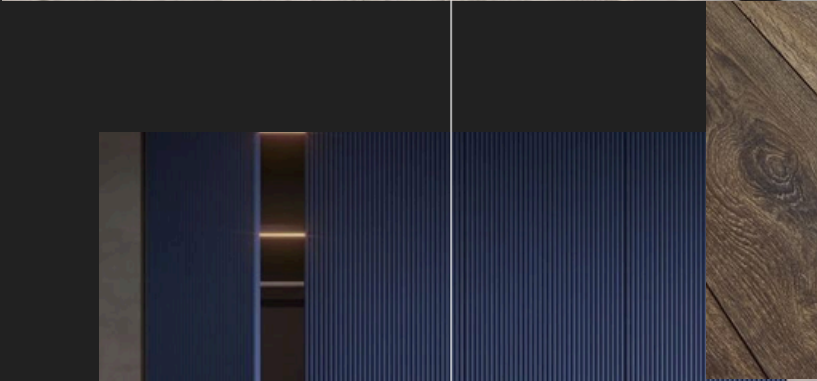
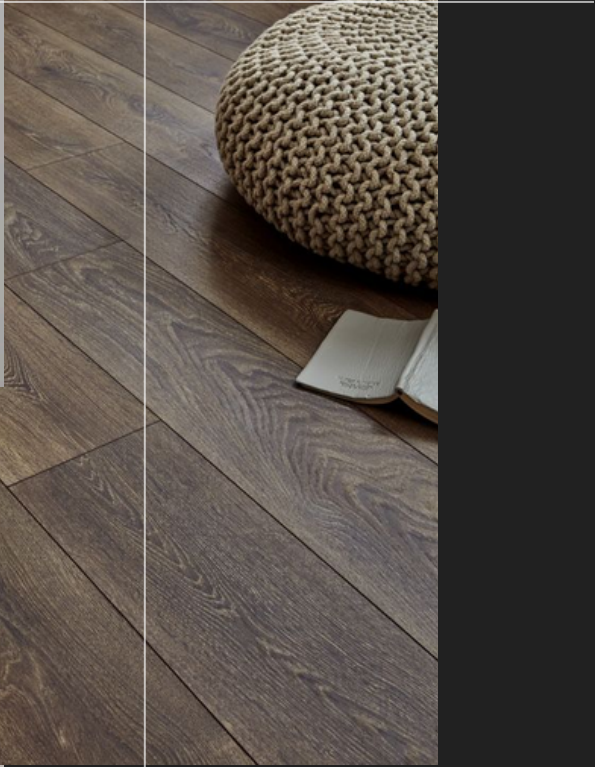
**Merino** →







BELIEVE IN  
THE MAGIC OF  
THE DECOR



ELEGANCE MOOD





**ATTIC DECOR**  
*Transform Your Space*

# LAMINATES

COLLECTION

**create a stylish interior for  
your space with the bold  
brilliance of Laminates**

[www.atticdecor.in](http://www.atticdecor.in)

# KITCHEN APPLIANCES

Collection







### Hobs

Cook in Style, Cook with Precision



### Induction

Energy Efficient and Eco-Friendly



### Cooktops

The Heart of Your Culinary Creations



### Ceiling Hoods

Quiet Power: Effective Ventilation, Stylish Design



### Island Chimney

Island Elegance, Powerful Performance



### Built in Hoods

Hidden Efficiency, Maximum Impact



### Built in Coffee Maker

Indulge your senses with a perfect cup every time



### Built in Ovens

Master every culinary technique with our versatility



### Built in Microwave

Experience the perfect blend of style and performance



## Dishwashers

Keep Warm, Serve Perfect in every occasion



## Cooking Range

Upgrade your kitchen with style and functionality



## Built in BBQ/Fryer

Outdoor Flavor, Indoor Convenience



## Dishwashers

Simplify your kitchen routine with our powerful dishwashers.



## Wine Chillers

Savor every sip with our premium wine chillers



## Refrigerators

Preserve freshness and flavor with advanced cooling

FIND OUR  
EXCLUSIVE  
COLLECTION OF  
**KITCHEN  
APPLIANCES**



Consistency Of  
**DELECTABLE DESIGNS**





# KITCHEN SINKS & FAUCETS

Collection



# STAINLESS STEEL



Carysil Avenger 24x17x8



Carysil Micro Radius Waltz Single Bowl 31x20x8



Carysil Micro Radius Waltz Single Bowl 24x20x8



Carysil Elegance Double Bowl 34x20x8



Carysil Quadro Q10 Single bowl 18x16x8



Carysil Micro Radius R10One and Half Bowl and Double Bowl 23x17x8.6

**Modern style,  
enduring function.**

# QUARTZ



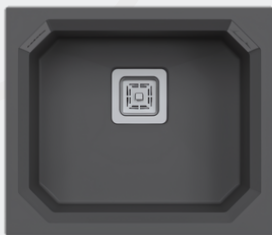
Carysil D100 New Beethoven Single Bowl with Drainer Kitchen sink



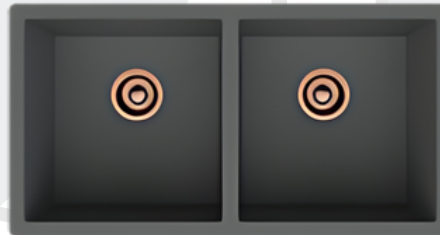
Carysil 780 Waltz kitchen Sink With Chrome Accessories



Carysil 250R Tango Double Bowl kitchen Sink



Carysil Crystal 2118 Single Bowl Kitchen sink



Carysil D200S Enigma Double bowl Kitchen sink



Carysil Bar Single Bowl Kitchen Sink

**The luxurious heart of  
your kitchen.**

# FAUCETS



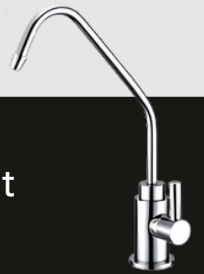
Sophisticate



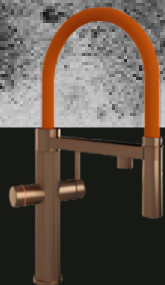
Elegance



Exquisite



Opulent



Classy



Sublime



**Creations That  
Inspire Art**



**Our Collection**



**ATTIC DECOR**  
*Transform Your Space*

---

# BATHROOM FITTINGS

---



# DIGITAL LOCKS & SAFES



DIGITAL  
CATALOGS



# SECURE YOUR WORLD



**SAFEGUARD YOUR TREASURES WITH  
OUR STATE-OF-THE-ART SAFES**



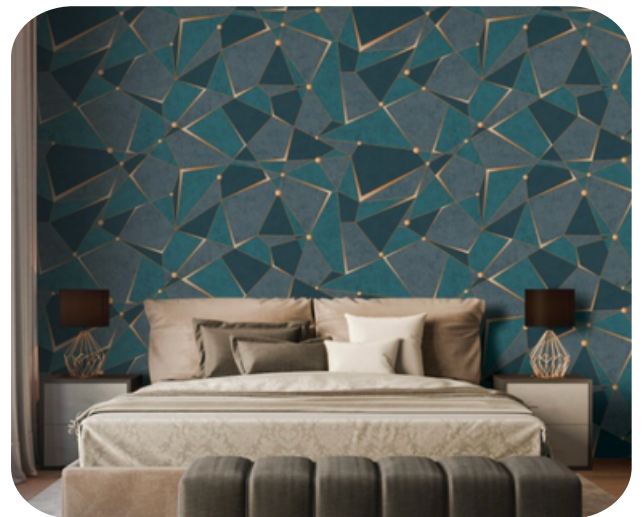
**ATTIC DECOR**  
*Transform Your Space*





**ATTIC DECOR**  
*Transform Your Space*

# WALL PAPER

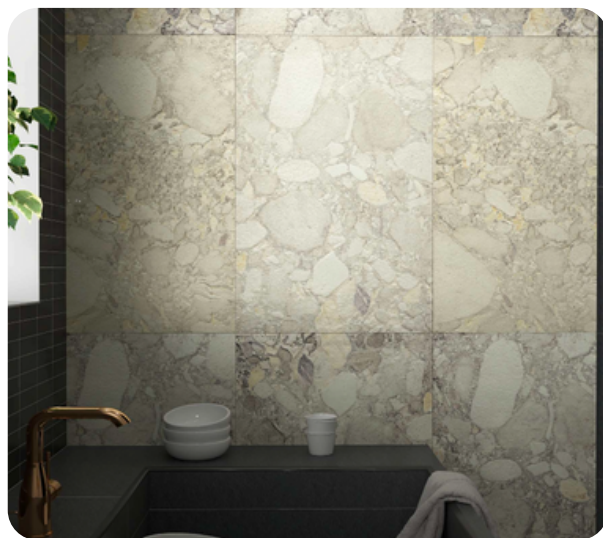






ATTIC DECOR  
*Transform Your Space*

# STONE VENEER

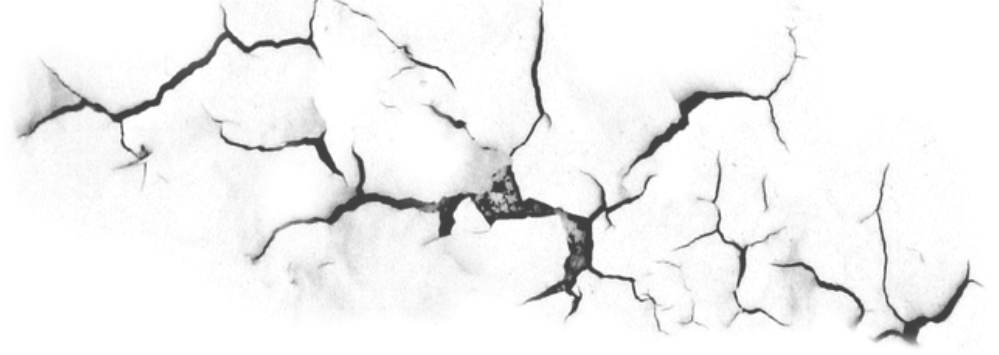


Our Collection



MINIMAL  
CLEAN  
EARTHY





# WOODEN FLOORING







**ATTIC DECOR**  
*Transform Your Space*



**Waste Management**



**Wicker Basket**

**Corner Solution**



# MODULAR KITCHEN

**Drawer System**



**Pantry Unit**

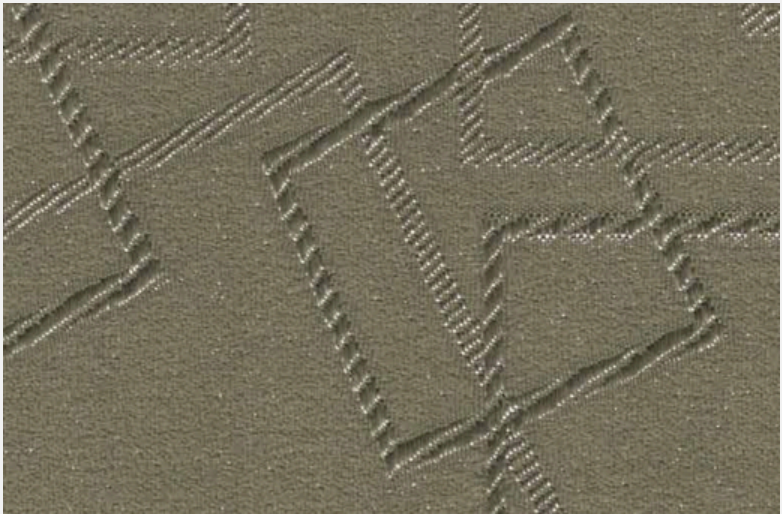
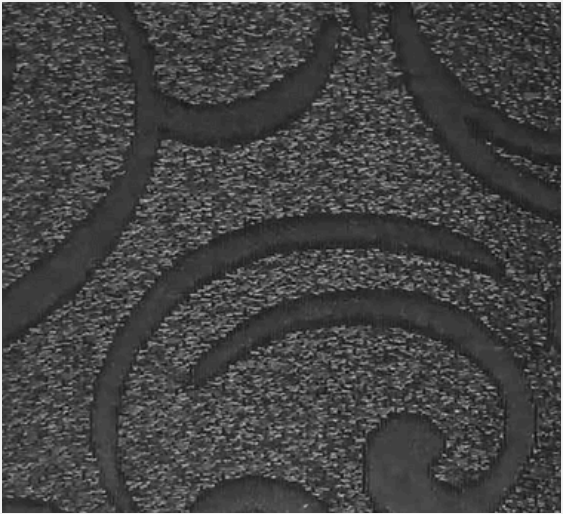
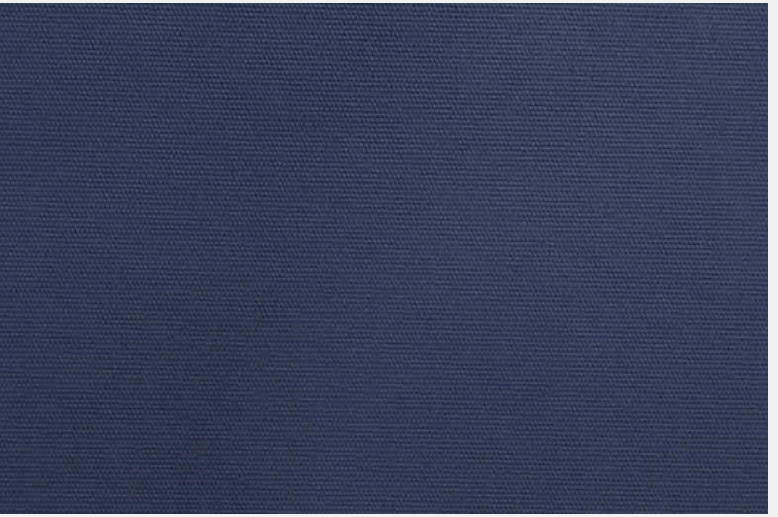




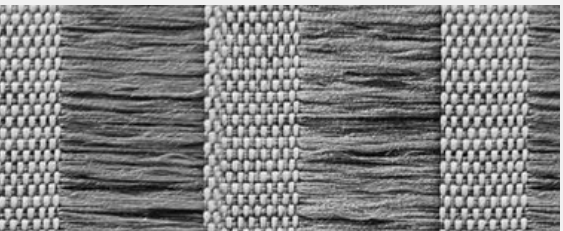


# BLINDS

Discover the perfect blinds for your home or office and transform your space today!

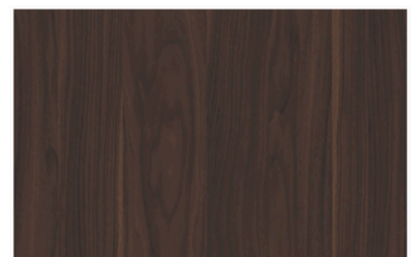
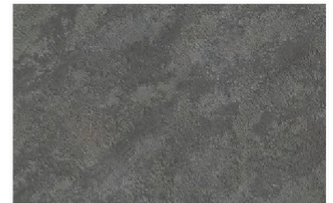
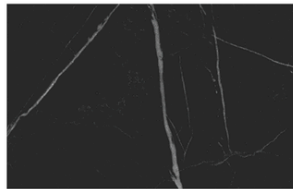
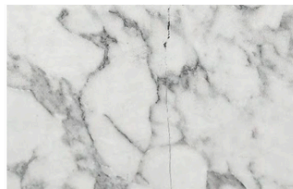
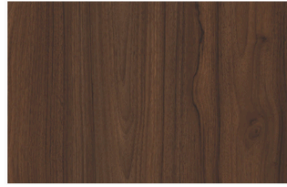
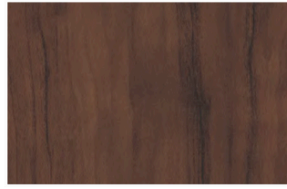


IT'S ALL  
ABOUT  
*Simplicity  
and aesthetics*





# EXTERIOR CLADDING



WWW.ATTICDECOR.IN





# GALLERY

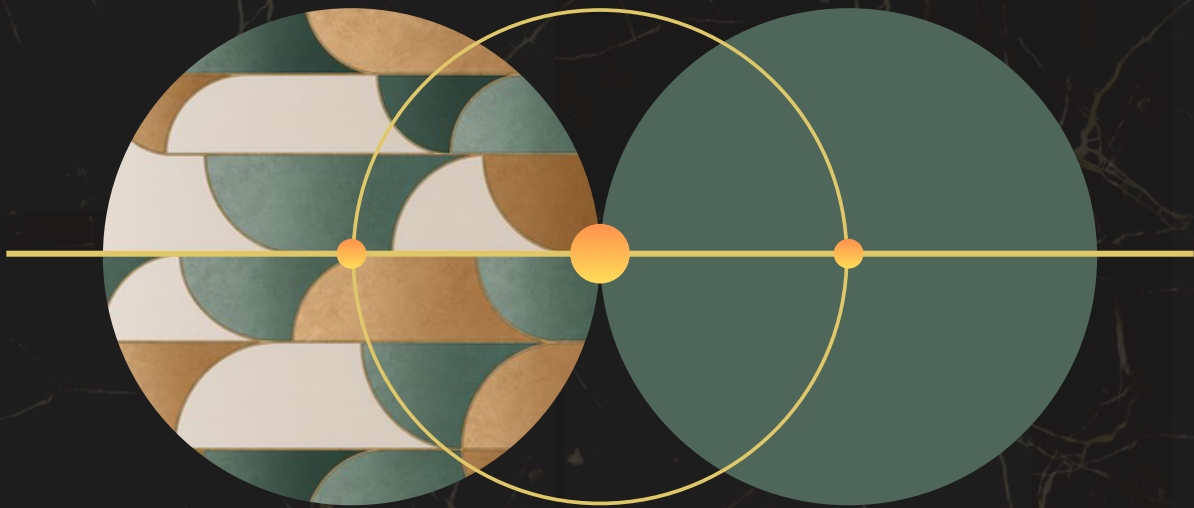






# ATTIC DECOR

*Transform Your Space*



**ADDRESS:** Attic Decor, No. 2437  
80ft Rd, Banashankri  
6th stage, 3rd Block  
Bengaluru, Karnataka  
560062

**MOBILE:** +91 9901133322  
+91 9051299199  
+91 9916228288

ATTICDECOR8@GMAIL.COM

WWW.ATTICDECOR.IN