

**CLADS**  
EXTERIOR GRADE COMPACT LAMINATES



[www.greenlamclads.com](http://www.greenlamclads.com)



# CONTENTS

---

About Greenlam Industries	01
About Greenlam Clads	04
Product Features	06
Product Construct	07
Application Possibilities	09
Greenlam Clads: Edge Over Others	11
Collection	14
Quality Assurance	37
Technical Specifications	39





Greenlam is among the world's top 3 surfacing solutions company with its presence in over 100 countries. Greenlam has focused on developing quality products with great passion for innovation. It offers end-to-end surfacing solutions spread across laminates, compacts, interior and exterior cladding, restroom cubicles and locker solutions, decorative veneers, and engineered wooden floors and doors. With two state-of-the-art manufacturing facilities in the country, it is the first choice of architects, interior designers, and homeowners when it comes to transforming living spaces. Greenlam thinks and acts to preserve nature in its pristine form by ethically sourcing of raw materials from the world over, thereby ensuring they are environment friendly and safe to use.





**CLADS**  
EXTERIOR GRADE COMPACT LAMINATES

## SOLUTION FOR EXTERIORS

Make heads turn with the incredibly stunning Greenlam Clads. A perfect solution for exterior wall cladding, Clads is a premium range of exterior-grade compacts that elevates the decor of your building. It takes the spotlight not only for its magnificent looks but also for its exceptional functionality. Like its unmatched GLE Technology that makes it strong enough to retard fire, extreme weather conditions, and even bacteria. Coupled with its 12-year warranty, Clads is an excellent choice for exterior cladding that lasts decades.





# UNMATCHED

## FEATURES



**12 YEARS  
WARRANTY**



**FIRE  
RETARDANT**



**EXCELLENT  
ANTI-GRAFFITI  
PROPERTIES**



**CHEMICAL  
RESISTANT**



**ENERGY  
EFFICIENT**



**MATCHING  
RIVETS**



**ANTI-DUST**



**MOISTURE  
RESISTANT**



**ENVIRONMENT  
FRIENDLY**



**LOW VOC  
EMISSION**



**RESISTANCE  
TO ACID RAINS**



**CORROSION  
RESISTANT**



**TERMITE  
RESISTANT**



**ANTI - BACTERIAL  
& ANTI - FUNGAL**



**ACOUSTIC  
RESISTANCE**



**GLE TECHNOLOGY**



**CAN WITHSTAND EXTREME  
TEMPERATURE CONDITIONS FROM  
-60°C TO +80°C**

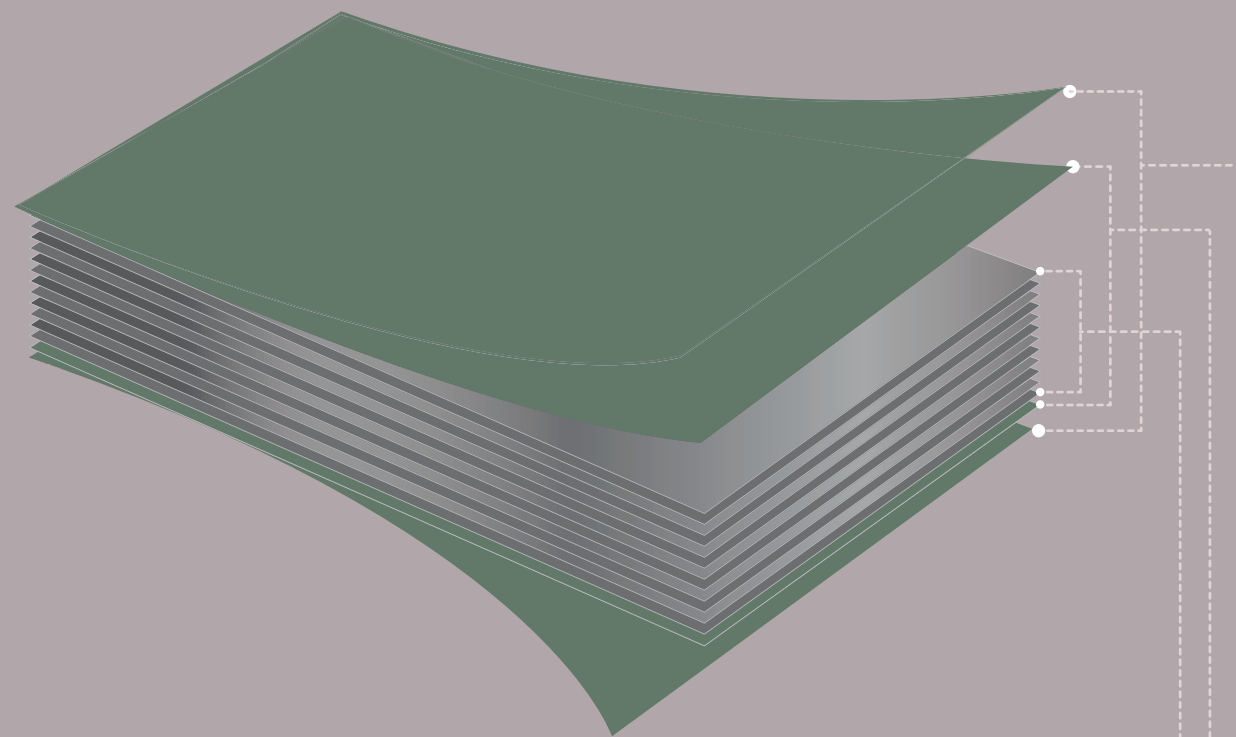


**SUPERIOR LIGHT FASTNESS  
PERFORMANCE (UV RESISTANCE)**

**STANDARD SIZE: 4.25' x 10' | 1300mm x 3050mm**  
**STANDARD THICKNESS: 6mm | 8mm | 10mm**  
**TEXTURE: Suede**



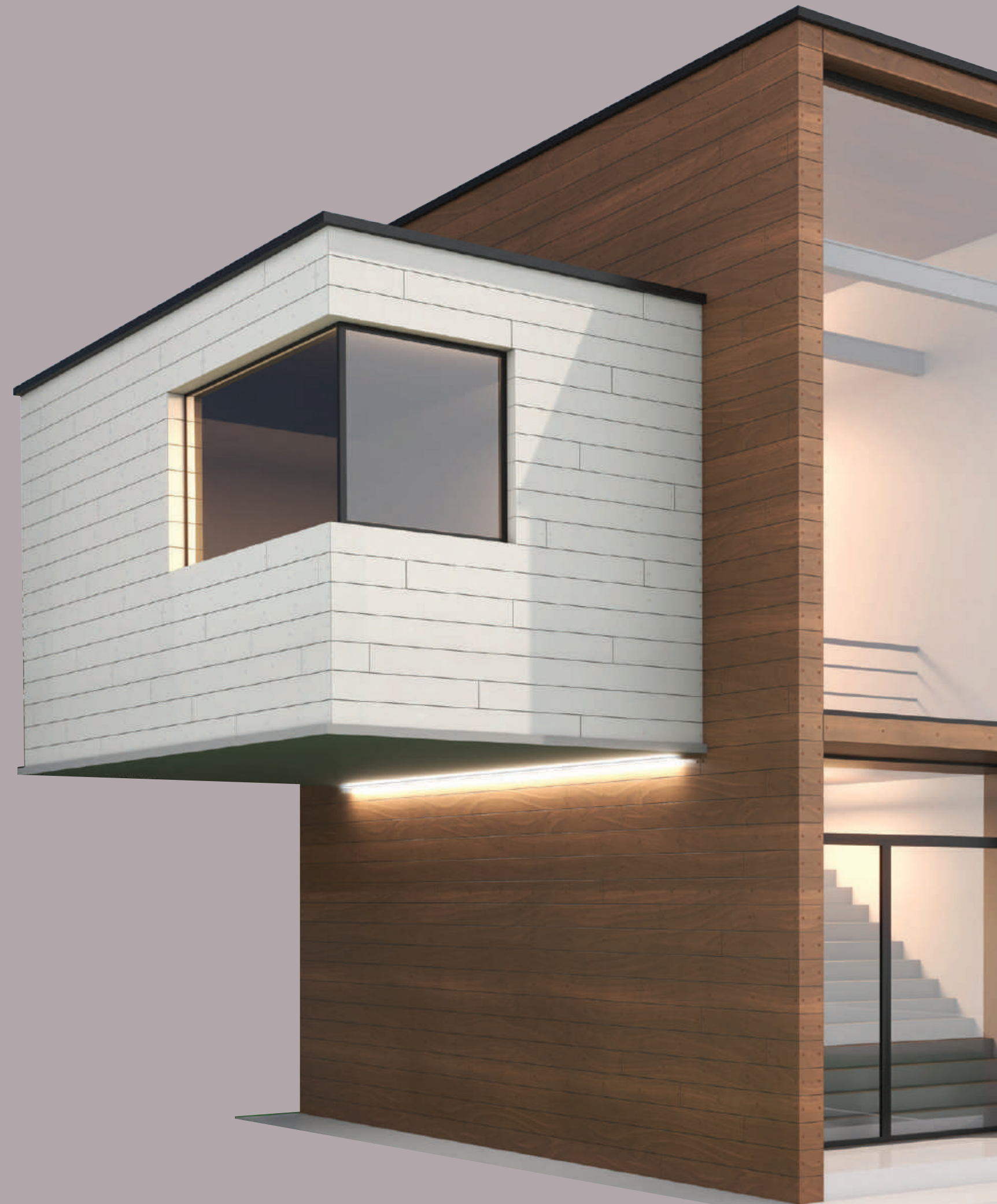
# PRODUCT CONSTRUCT



Kraft Core Treated with Special Chemicals  
and Halogen-Free FR Additives in Thermosetting Resin

Special Exterior Décor Paper Impregnated  
with Thermosetting Resin on Both Sides

Special Polymeric Film for  
Surface Protection on Both Sides





# ENDLESS POSSIBILITIES

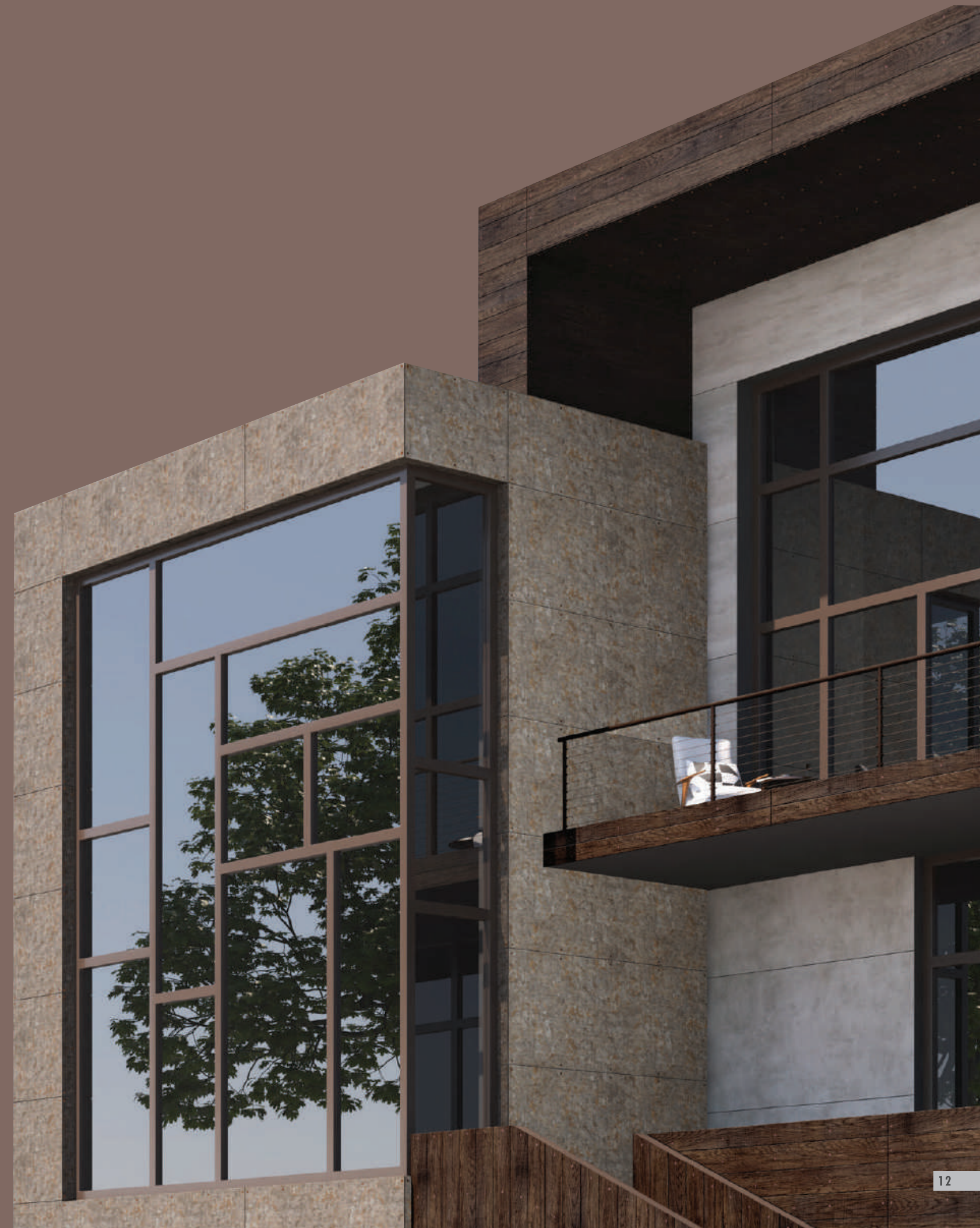




# GREENLAM CLADS

## EDGE OVER OTHERS

	HARDWOOD	ACP	GLASS	STONE	TILE	CLADS
Fire Retardant	✗	✗	✓	✓	✓	✓
Easy to Maintain	✗	✓	✗	✗	✓	✓
Quick & Easy Installation	✓	✓	✗	✗	✓	✓
Durability	✗	✗	✗	✓	✓	✓
Ant-Graffiti	✗	✗	✗	✗	✗	✓
Energy Efficient	✗	✗	✗	✗	✗	✓
Chemical Resistant	✗	✗	✗	✗	✗	✓
Anti-Dust	✗	✗	✗	✗	✗	✓
Corrosion Resistant	✗	✗	✗	✗	✗	✓
Customisable	✗	✗	✗	✗	✗	✓



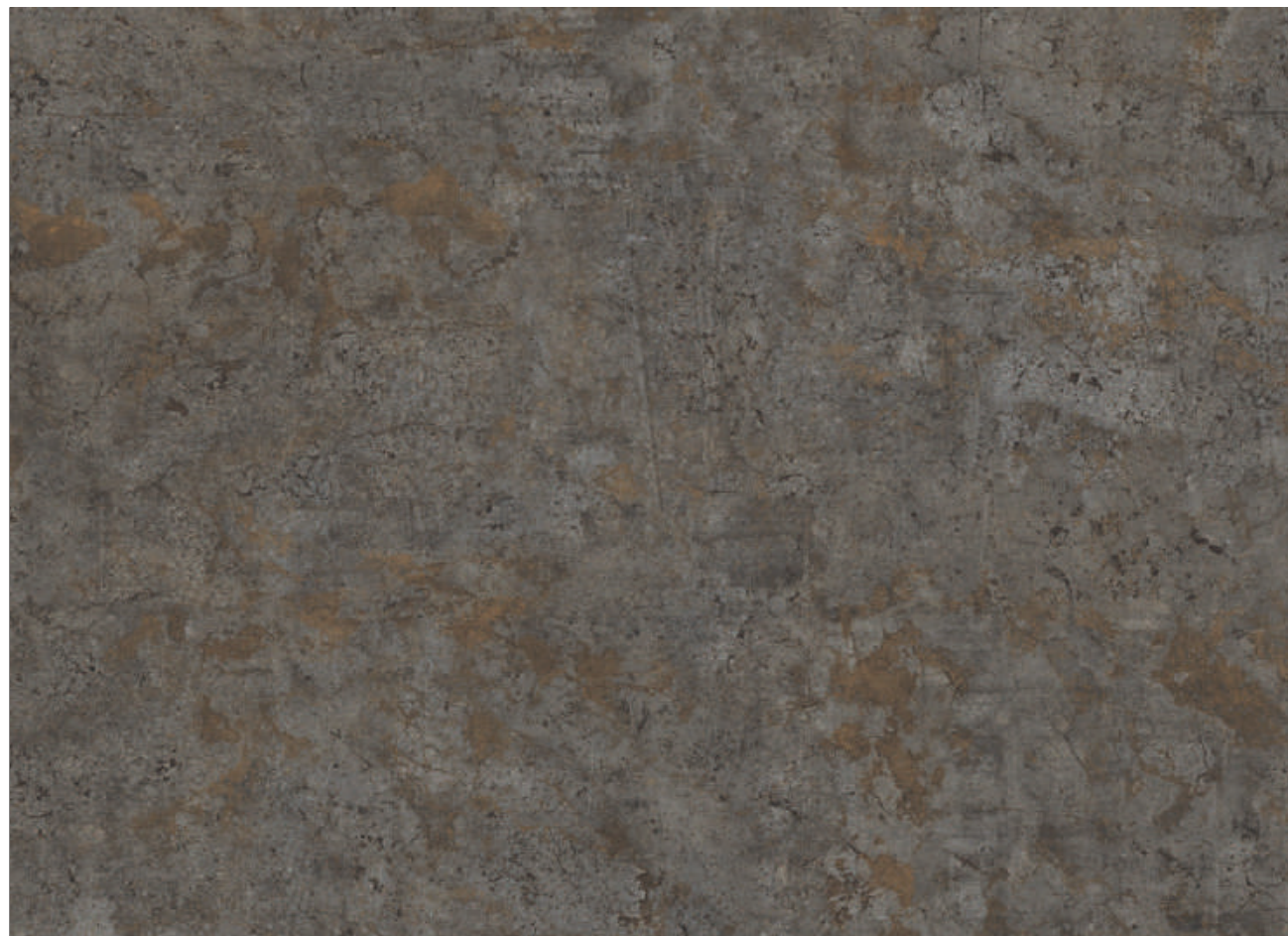




PRODUCT  
RANGE

**P A T T E R N S**





NEW

MOLTEN GREGIO **9211**

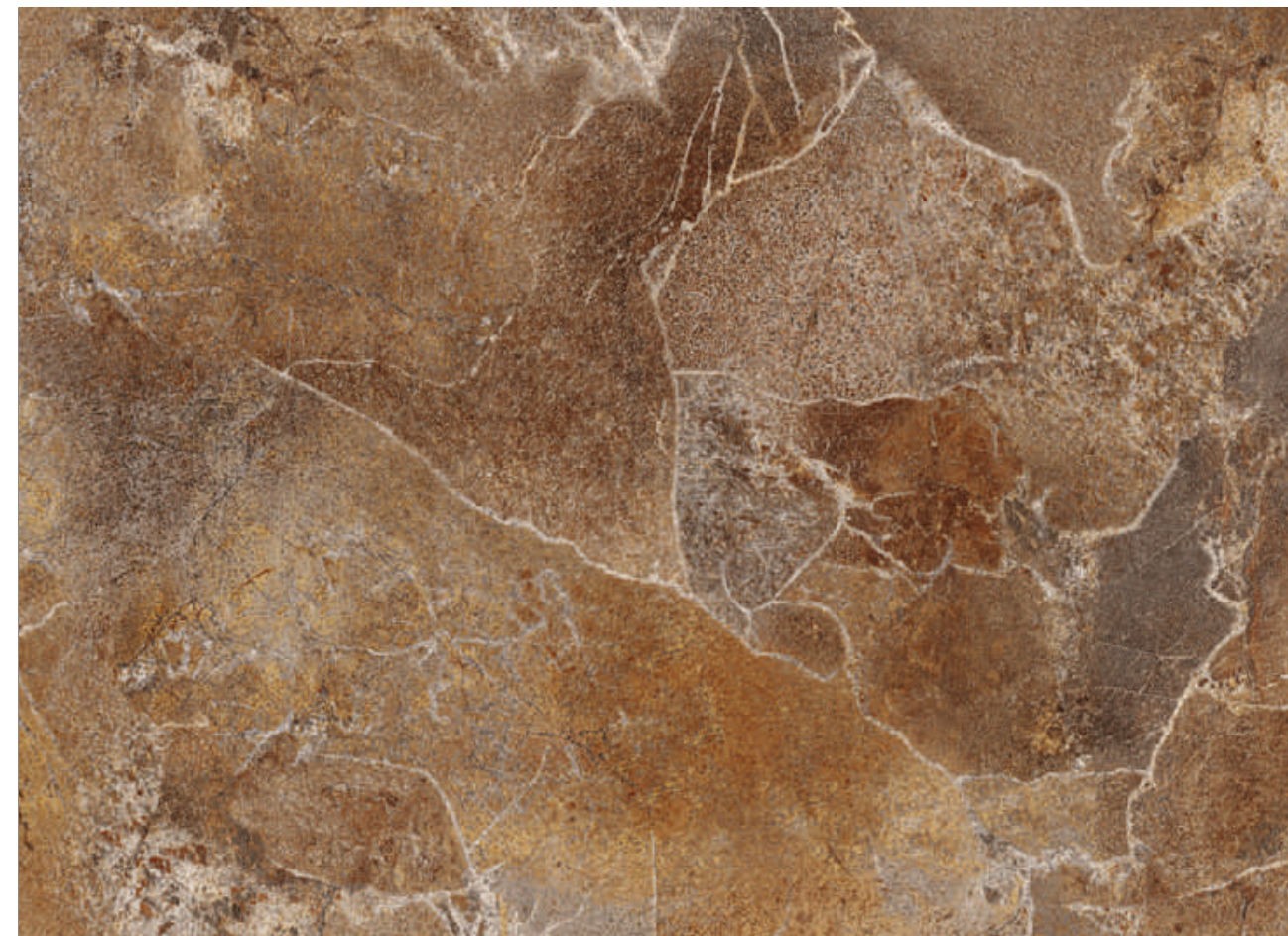


NEW

FERROUS CEMENTO **9213**



RUSSET STEIN **9209**



NEW

ROCK SALT **9212**



NEW

LAVA MORENO **9210**

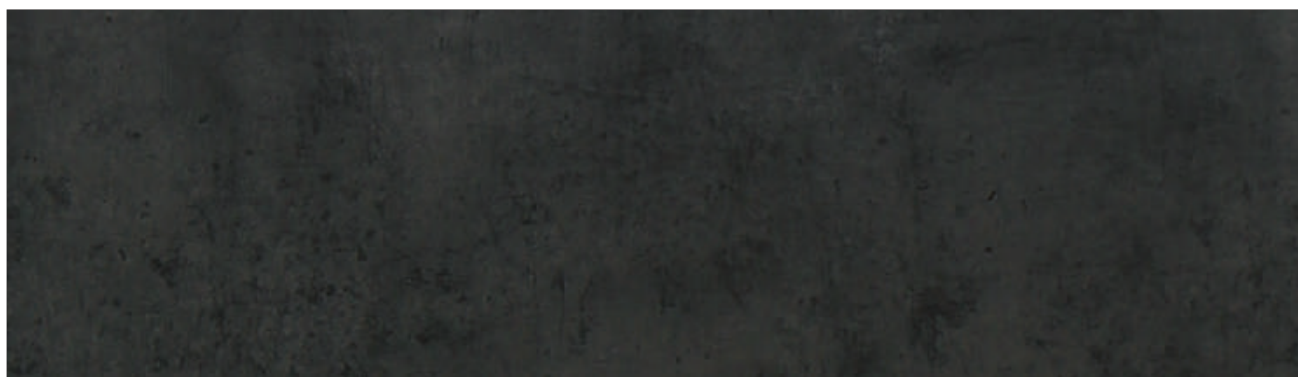




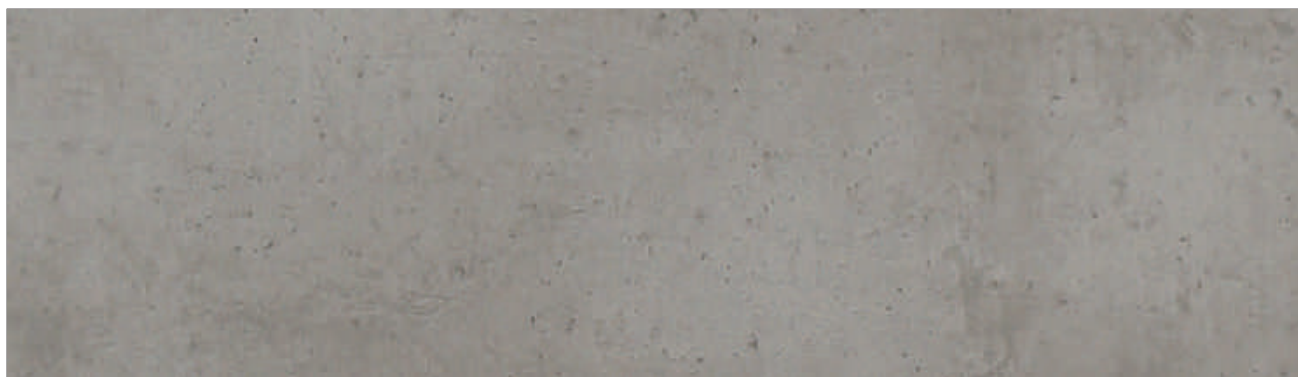
LAVA STONE **9206**



CITRON STONE **9205**



PIETRA **9208**



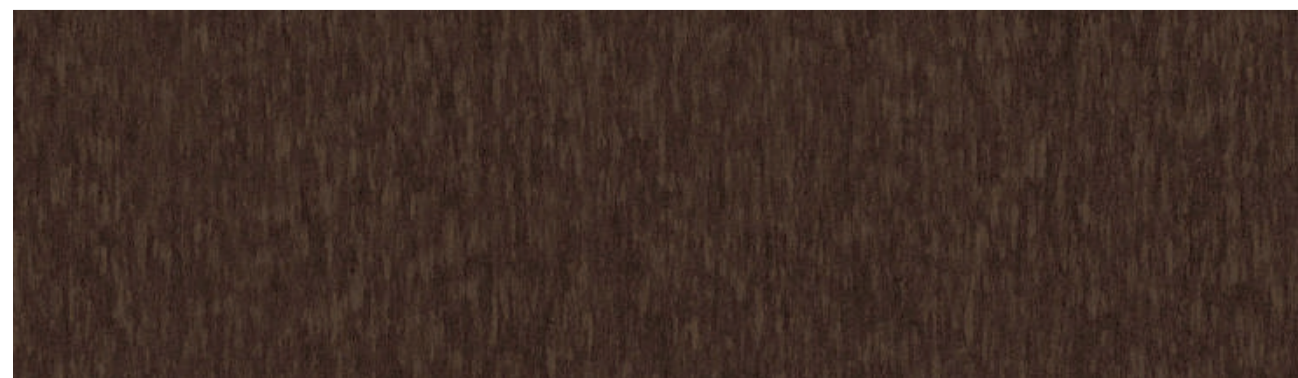
HARBOUR **9207**



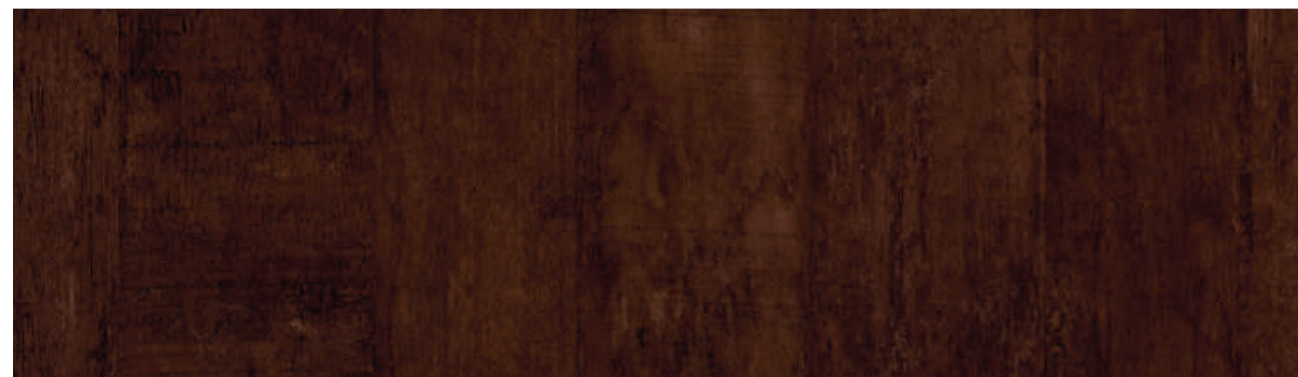
CEMENTRIO **9203**



ELDORADO **9202**



METROPOLITAN **9204**



PREMIO **9201**



PRODUCT  
RANGE

WOODS





NEW

MORGAN OAK **9118**



NEW

SUNBURN OAK **9117**



NEW

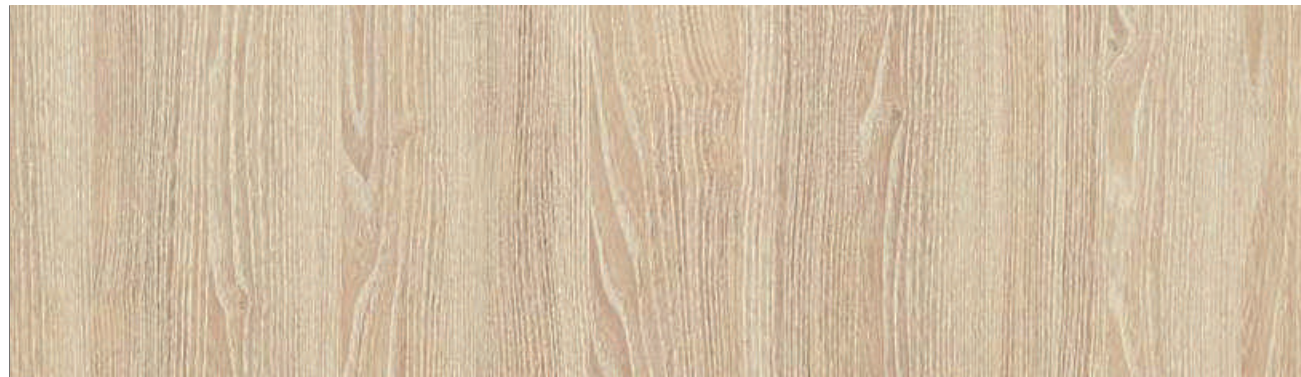
EDEN OAK **9116**



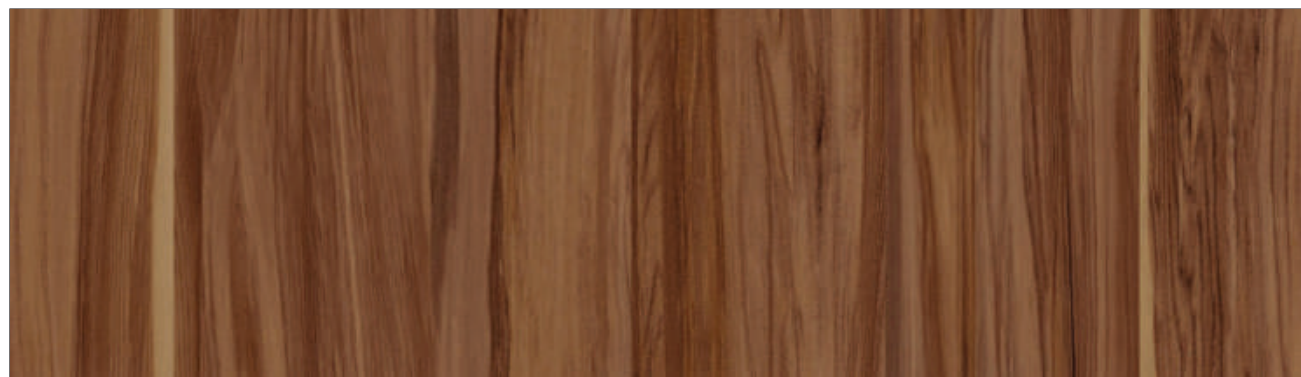
NEW

DEAGIO OAK **9119**

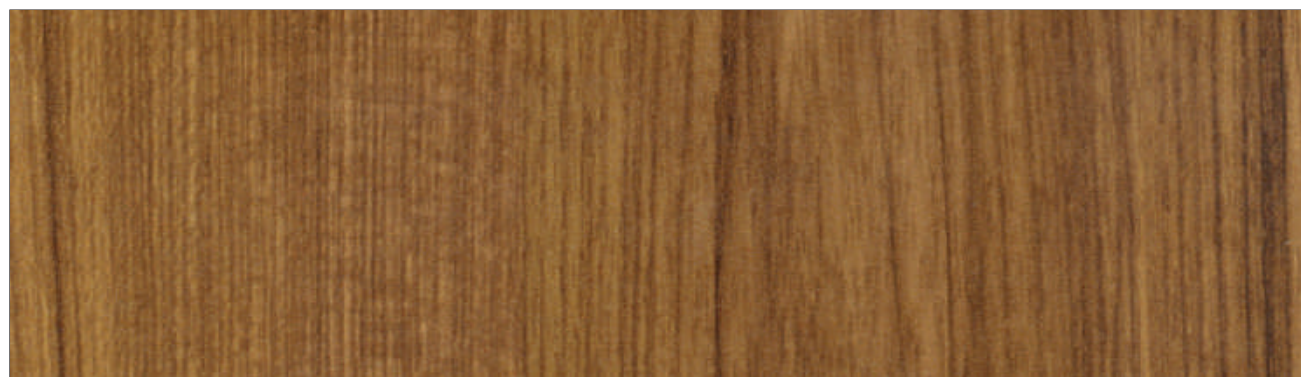




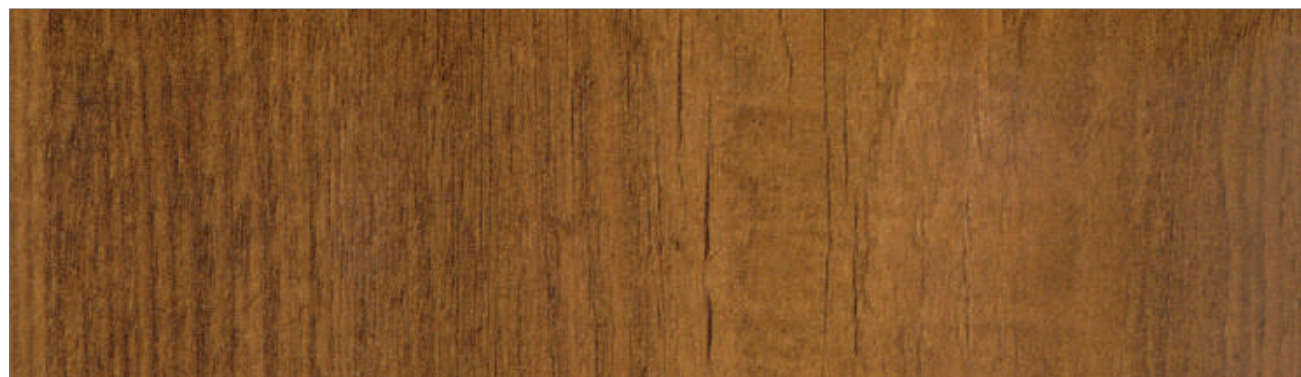
OREGON OAK **9114**



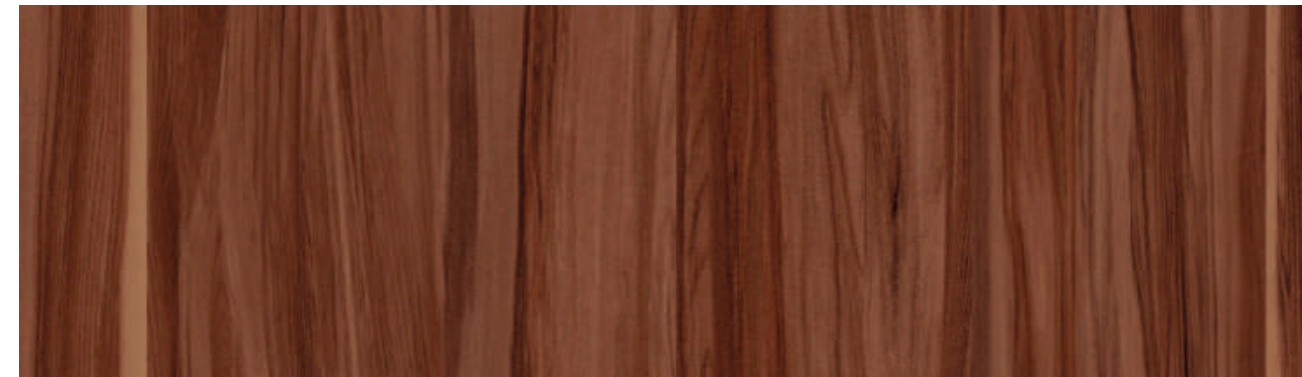
CARAMEL STREAK **9105**



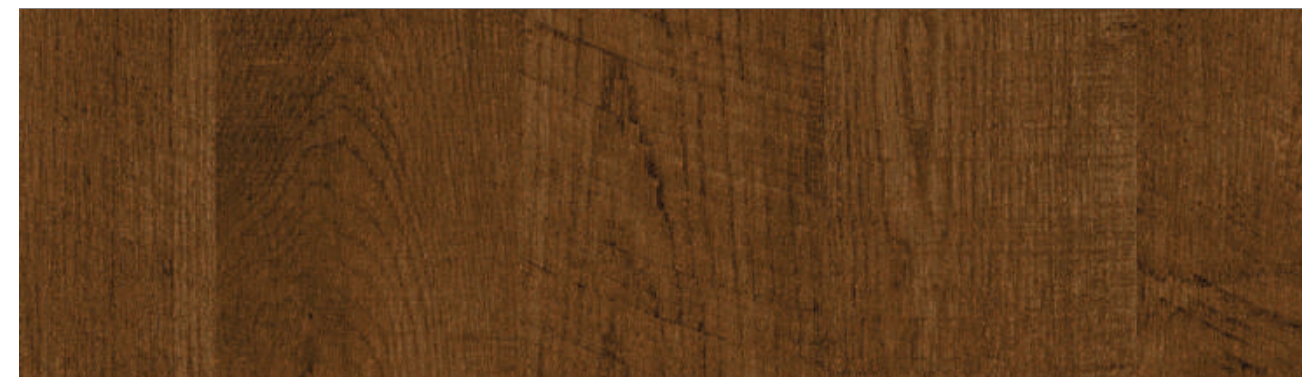
TRUSTED TEAK **9112**



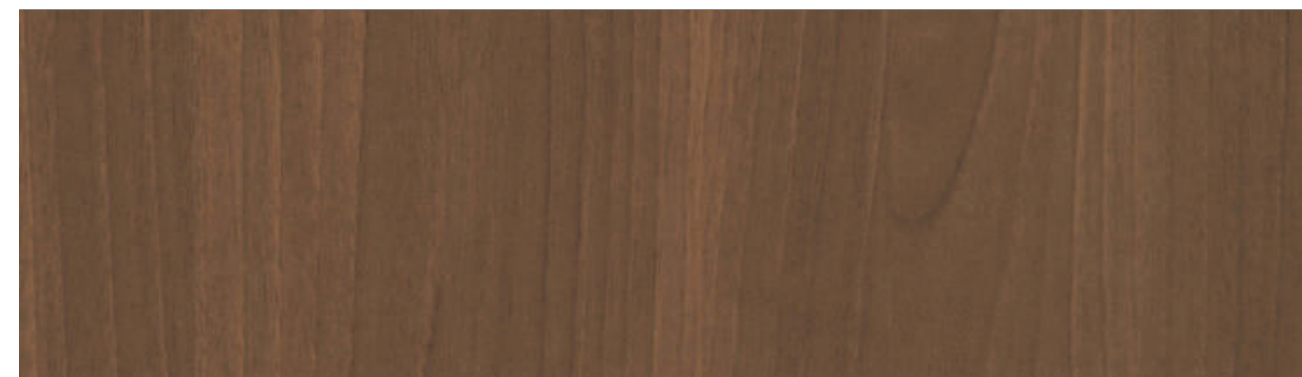
NOVACENTO PINE **9111**



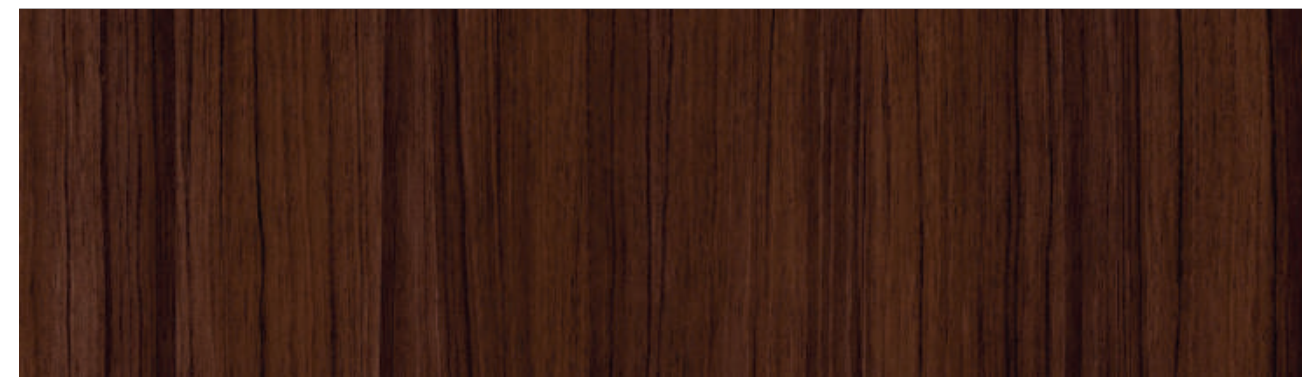
CORAL STREAK **9106**



ARCH WOOD **9108**



PURE WALNUT **9110**

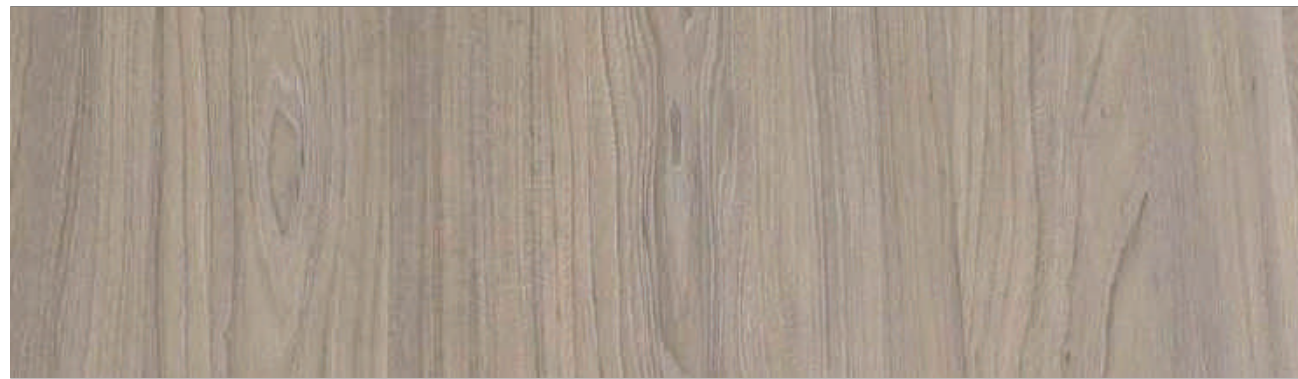


ENIGMA **9104**

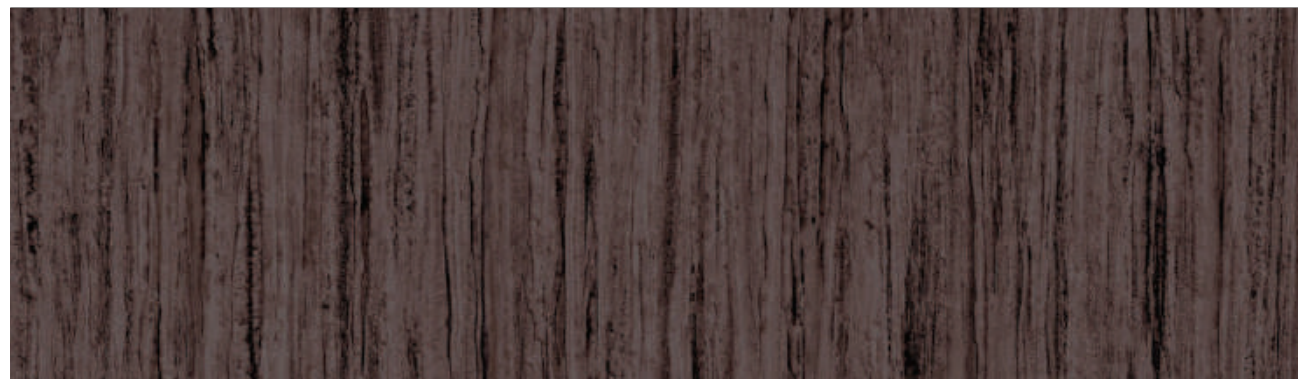




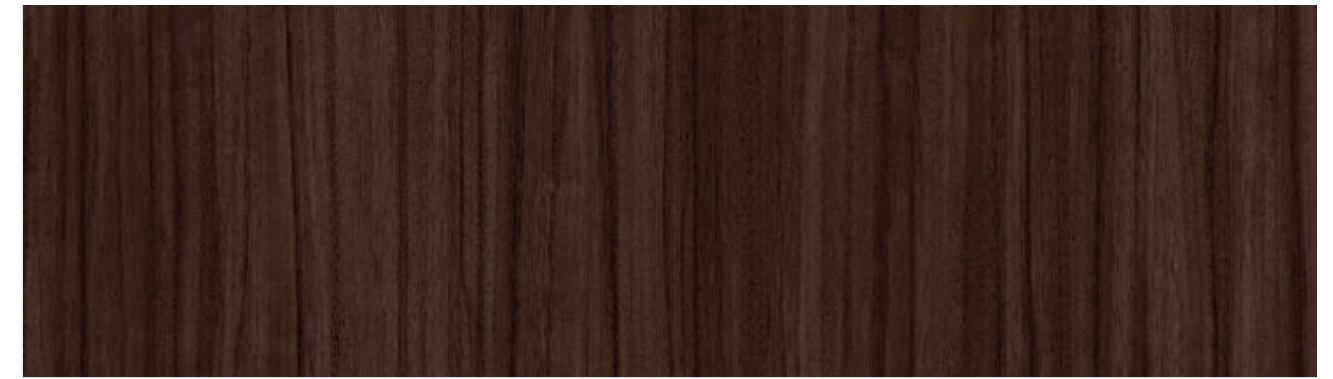
ICELANDIC OAK **9113**



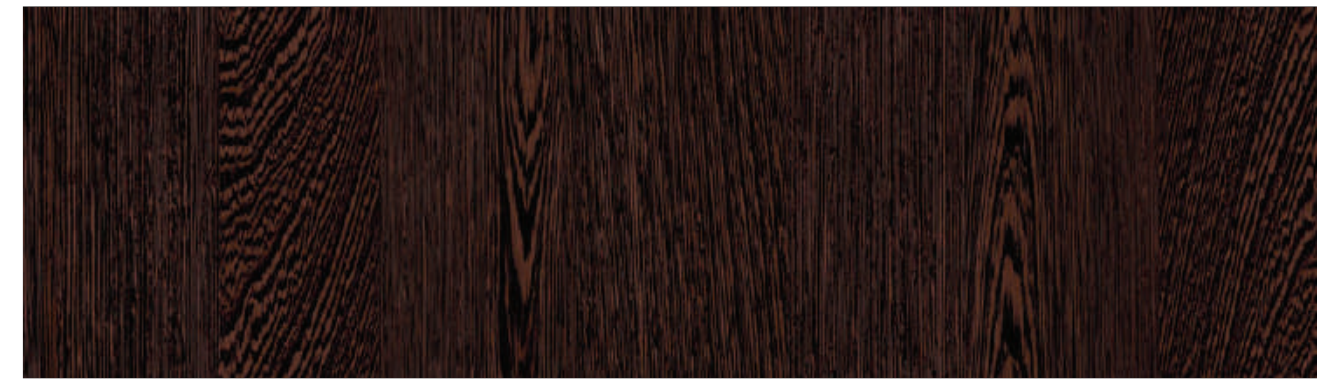
NEVADA ELM **9115**



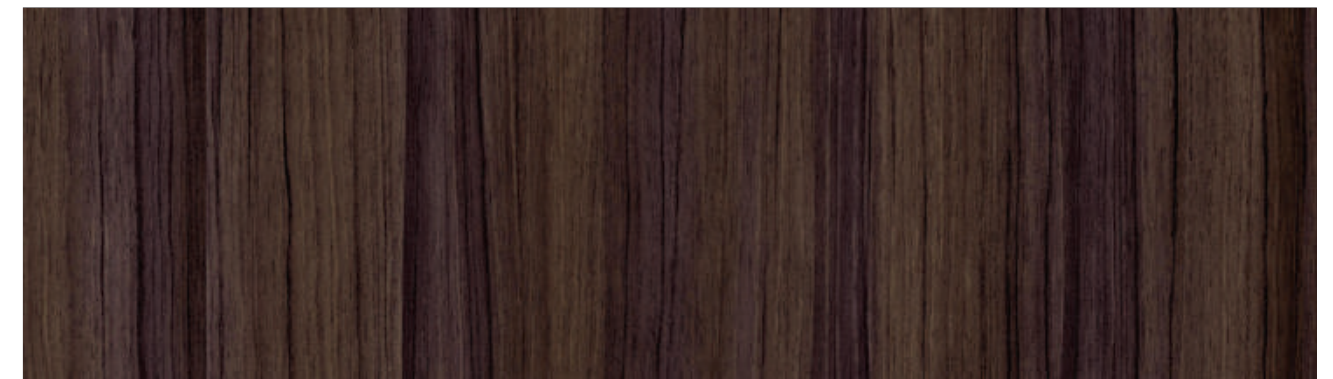
SNAKE WOOD **9109**



LORRAINE WALNUT **9107**



INNATE WENGE **9102**



SMOLDERED WOOD **9103**



PRODUCT  
RANGE

**COLOURS**



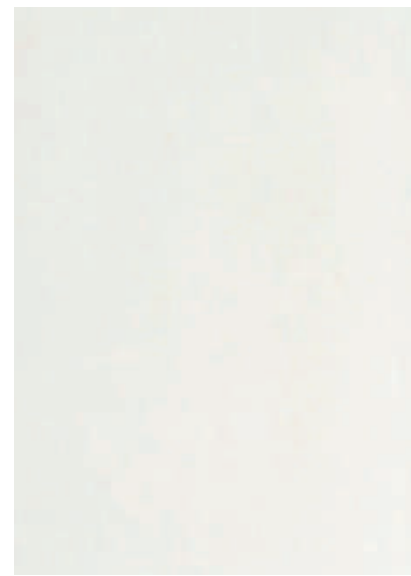


NEW

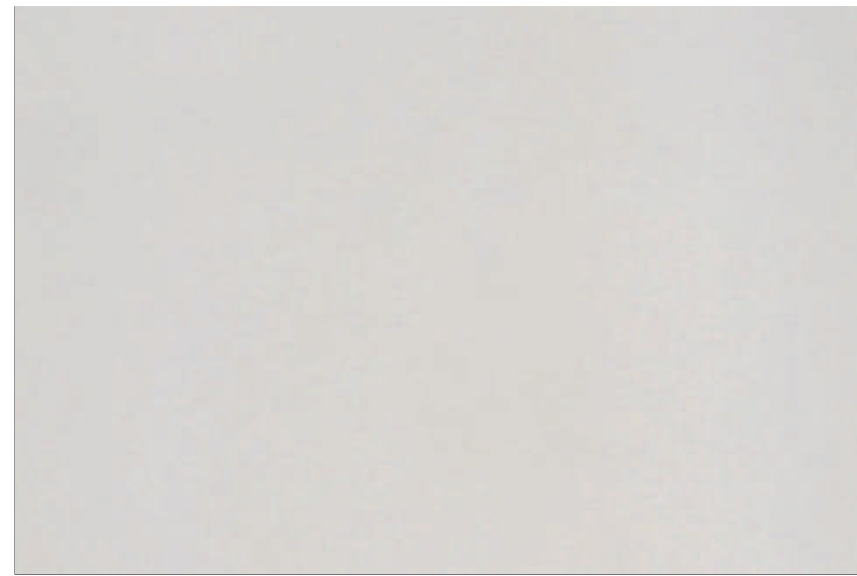
ROCK BROWN **9279**



MINERAL YELLOW **9280** NEW



CLEAR WHITE **9271**



OYSTER **9272**



NEW

SAGE **9278**



VERMILION RED **9275**



NEW

MARINE BLUE **9281**



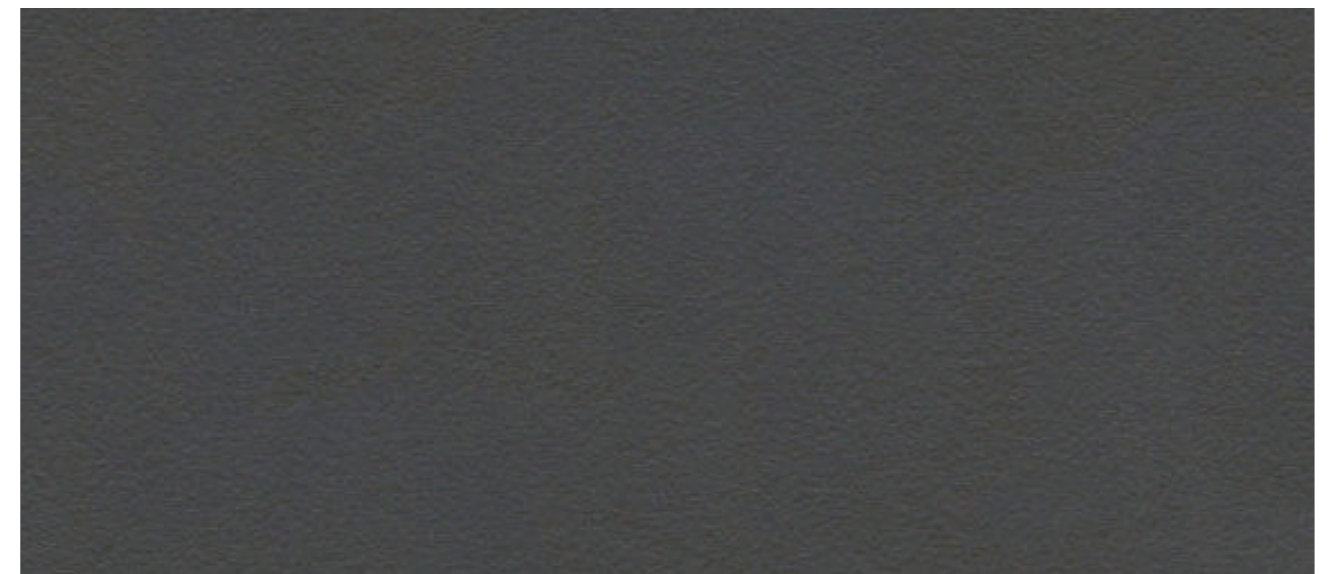
CANE **9276** NEW



FRENCH BEIGE **9277** NEW



CHOCO BROWN **9274**



MURKY GREY **9273**















# QUALITY ASSURANCE



\*To know more on test reports please visit [www.greenlamclads.com](http://www.greenlamclads.com)





# TECHNICAL SPECIFICATIONS

Product: Greenlam Exterior Clads 1.30m x 3.05m

Properties	Unit	Test Method as per EN 438 Part 2 : 2016	Specified Values as per EN 438 Part 6: 2016	Greenlam Clads' Results
<b>Physical &amp; Dimensional Properties</b>				
Classification	EN 438-6- 4		Exterior Severe Use Flame Retardant Grade, Edf	
Surface Quality (Dirt, Spots etc.)	mm <sup>2</sup> /M <sup>2</sup>	EN 438-6, 5.2.4	2.0 (max)	Complies
Fibers, Hairs & Scratches etc.,	mm/M <sup>2</sup>		20.0 (max)	Complies
Thickness & Maximum Variation	mm	EN 438-2 – 5	2,0 ≤ t < 3,0 : ± 0,20 3,0 ≤ t < 5,0 : ± 0,30 5,0 ≤ t < 8,0 : ± 0,40 8,0 ≤ t < 12,0 : ± 0,50 12,0 ≤ t < 16,0 : ± 0,60 16,0 ≤ t < 20,0 : ± 0,70 20,0 ≤ t < 25,0 : ± 0,80 25,0 ≤ t : As agreed	Complies
Length & Width	mm	EN 438-2 – 6	+10mm /-0mm	+5mm /-0mm
Flatness	mm/M	EN 438-2 – 9	2,0 ≤ t < 6,0 : 8.0 6,0 ≤ t < 10,0 : 5.0 10,0 ≤ t : 3.0	Complies
Edges Straightness	mm/M	EN 438-2 – 7	1.5 (max)	≤ 1
Edges Squareness	mm/M	EN 438-2 – 8	1.5 (max)	Complies
Density	g/cm <sup>3</sup>	EN ISO 1183 -1 :2004	1.35	1.38
Dimensional Stability at Elevated Temperature		EN 438-2 – 17		
a) Longitudinal	%		0.30(max.)	0.18
b) Transverse	%		0.60 (max)	0.38

## Mechanical Properties

Resistance to Wet Conditions,	EN 438-2 : 15			
Increase in Mass	%		8.0 (max)	4.1
Surface Rating	Rating		4 (min)	5
Edge Rating	Rating		3 (min)	3
Resistance to Impact by Large Diameter Ball				
Drop Height	EN 438-2 -22	mm	1800	2000
Diameter of Indentation		mm	10 (max)	7
Flexural Strength	EN ISO 178:2003	Mpa	80 (min)	100
Flexural Modulus	EN ISO 178:2003	Mpa	9000(min)	10700
Thermal Conductivity	EN 12524:2000	W/M <sup>2</sup> K	No Requirement	0.24
Resistance to Fixing (Screw Pull Out Strength)	ISO 13894-1; 9	N	2000 (min)	Meets

## Light Fastness & Weather Resistance

Resistance to Climatic Shock				
a) Flexural Strength Index	EN 438-2 : 19	Rating	Appearance -4 (min)	4
b) Flexural Modulus Index		Rating	Ds - 0.80 (min)	Meets
		Rating	Dm - 0.80 (min)	Meets
Resistance to Artificial Weathering Including Light Fastness, After 650 MJ/M <sup>2</sup> Radiant Exposure, (for Over 3500 Hours of Exposure)	EN 438-2-29	Rating (after 3000 Hours as per Standard)	Grey Scale contrast-3 (min) Appearance- 4 (min.)	3-4 4-5
Resistance to UV Light, after 1500 Hours Exposure	EN 438-2-28	Rating	Grey Scale Contrast-3 (min) Appearance- 4 (min.)	3-4 4-5

Properties	Unit	Test Method	Specified Values	Greenlam Clads Results
<b>Fire Performance</b>				
Reaction to Fire	EN 13501-1-2017	Euro Class	≥ 6.0mm -B-s2, d0	B-s1, d0
Surface spread of flame		Class	A	A
Flame Spread Index	UL 723	Index	0-25	Meets
Smoke Development Index		Index	0 - 450	Meets
Calorific Value	ISO 1716: 2010	MJ/ Kg	19.91 (max)	Meets

## Health Characteristics

Anti-Bacterial Efficacy & Activity				
% Reduction in 24 hours	JIS 2801-2012	%	95.0 (min)	99.99
Activity After 24 hours		Log Reduction	2.0 (min)	Exceeds
Anti-Fungus Efficacy				
Growth After 28 days	ASTM G-21-2015	Class	1	0 (No Growth)

## Corrosion Resistance

Resistance to Corrosion with 5% Sodium Chloride Spray	ASTM B 117	Hours	500 Minimum (Industry standard)	Exceeds 700
Resistance to acid rains (of 10% HCl)	In House	Hours	None	24

Properties	Unit	Test Method	Specified Values	Greenlam Clads Results
------------	------	-------------	------------------	------------------------

## Sound Insulation Characteristics In Building & Building Elements

Sound Transmission Class (STC)	IS: 9901 (Part III)-1981, DIN: 52210 Part 1-1983 ISO: 10140 (Part II)/ ASTM – E - 90	Class	No Specification	28
--------------------------------	--	-------	------------------	----

Class (Rating) : 1 = Surface Damage 2 = Severe appearance alteration 3 = Moderate Change 4 = Slight change visible from certain angle 5 = No Change

Bacteria Tested: 1. Pseudomonas Aeruginosa, 2. Enterococcus Faecalis, 3. Candida Albicans, 4. Pseudomonas Aeruginosa, 5. Escherichia Coli, 6. Klebsiella Pneumoniae, 7. MRSA (Methicillin Resistant Staphylococcus Aureus), 8. Salmonella Enterica

Fungus Tested: 1. Aspergillus niger, 2. Penicillium funiculosum, 3. Gliocladium virens, 4. Chaetobium globosum 5. Aurobasidium pullulans

Note: Greenlam products are manufactured thoroughly to standards. The values given above are to the best of knowledge but without liability/warranty, expressed or implied.





**GLOBAL HEADQUARTER**  
**GREENLAM INDUSTRIES LIMITED**

2nd Floor, West Wing, Worldmark 1, Aerocity IGI Airport Hospitality District, New Delhi-110037.

Tel: (91 11-4279-1399). Email: info@greenlam.com

**Toll Free No: 1800 833 0004**  
**www.greenlamindustries.com**

**GREENLAM EXPERIENCE CENTER**

25/B, Shop No. E & F, Mirza Ghalib Road, Park Street, Opposite Westside Mall, Kolkata-700016, India.

Contact No.: +91 33 4601 7151; +91 9836007771; +91 6292263309

E-mail: experiencecenter.kolkata@greenlam.com

**BRANCH OFFICES**

- **AGRA** : +91 7607000996
- **AHMEDABAD** : +91 9909983383
- **BANGALORE** : +91 6366892055
- **BHUBANESHWAR** : +91 9777454083
- **CHANDIGARH** : +91 9779450510 / 0172-62512583
- **CHENNAI** : +91 6381815215 / 044-42822672
- **COIMBATORE** : +91 9003917470 / 0422-4370407
- **DELHI/NCR** : +91 9650101768
- **GHAZIABAD** : +91 9650627111
- **GUWAHATI** : + 91 8134944778 / 0361-2733306
- **HYDERABAD** : +91 9985711880 / 040-24801429
- **INDORE** : +91 7566661395 / 0731-4206153
- **JAIPUR** : +91 9818040684 / 0141-2333747
- **KOCHI** : +91 9746474575 / 0484-2531598
- **KOLKATA** : +91 9007011903
- **LUCKNOW** : 7521000128 / 0522-4000475
- **MUMBAI** : +91 9136102399
- **MADURAI** : +91 9500099471
- **NAGPUR** : +91 9158886981
- **PATNA** : +91 9771404756 / 0612-6450235
- **PUNE** : +91 9730084501 / 020-26169307
- **ROHTAK** : +91 9896393599
- **RAIPUR** : +91 7566661395
- **RANCHI** : +91 9031002133
- **VIJAYAWADA** : +91 9949818673 / 0866-2523135



Scan QR Code  
To Visit:

[www.greenlamclads.com](http://www.greenlamclads.com)

Not for Sale

